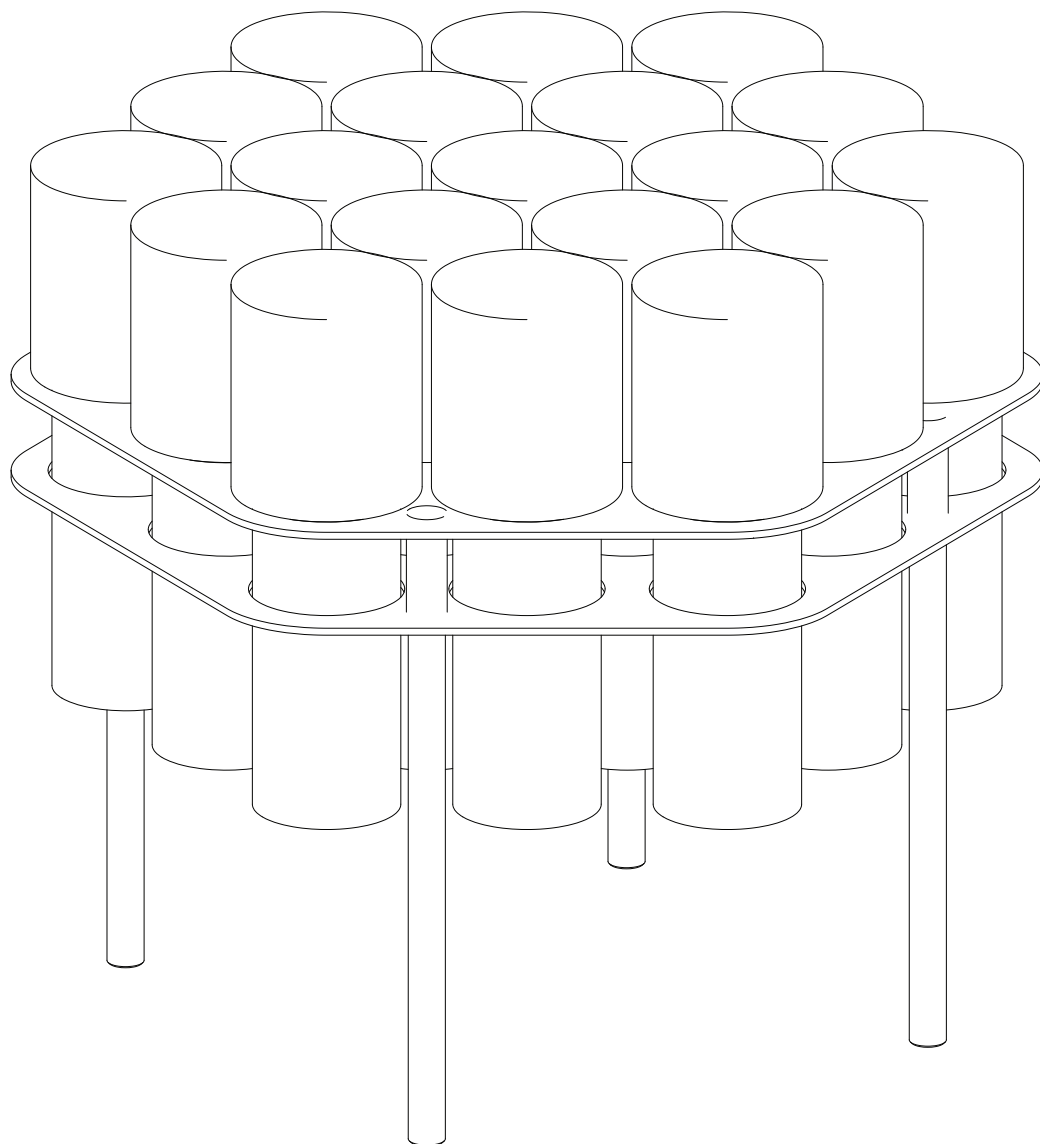




FIELD TABLE 19

Installation Instructions



SkLO

sklo.com

SkLO US 115 WEST NORTH STREET HEALDSBURG CALIFORNIA 95448 USA +1.707.385.2101 us@sklo.com
SkLO EU BRATŘÍ ŠTEFANŮ 902/71 500 03 HRADEC KRÁLOVÉ CZECH REPUBLIC +420.495.542.071 eu@sklo.com

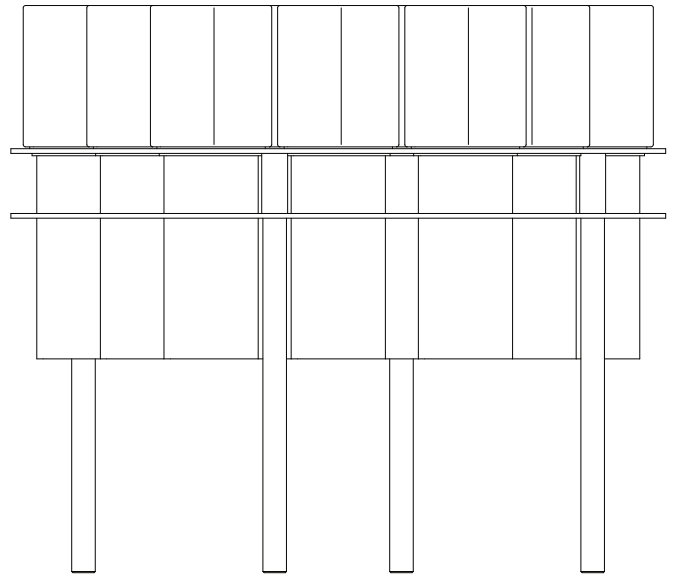


FIELD TABLE 19

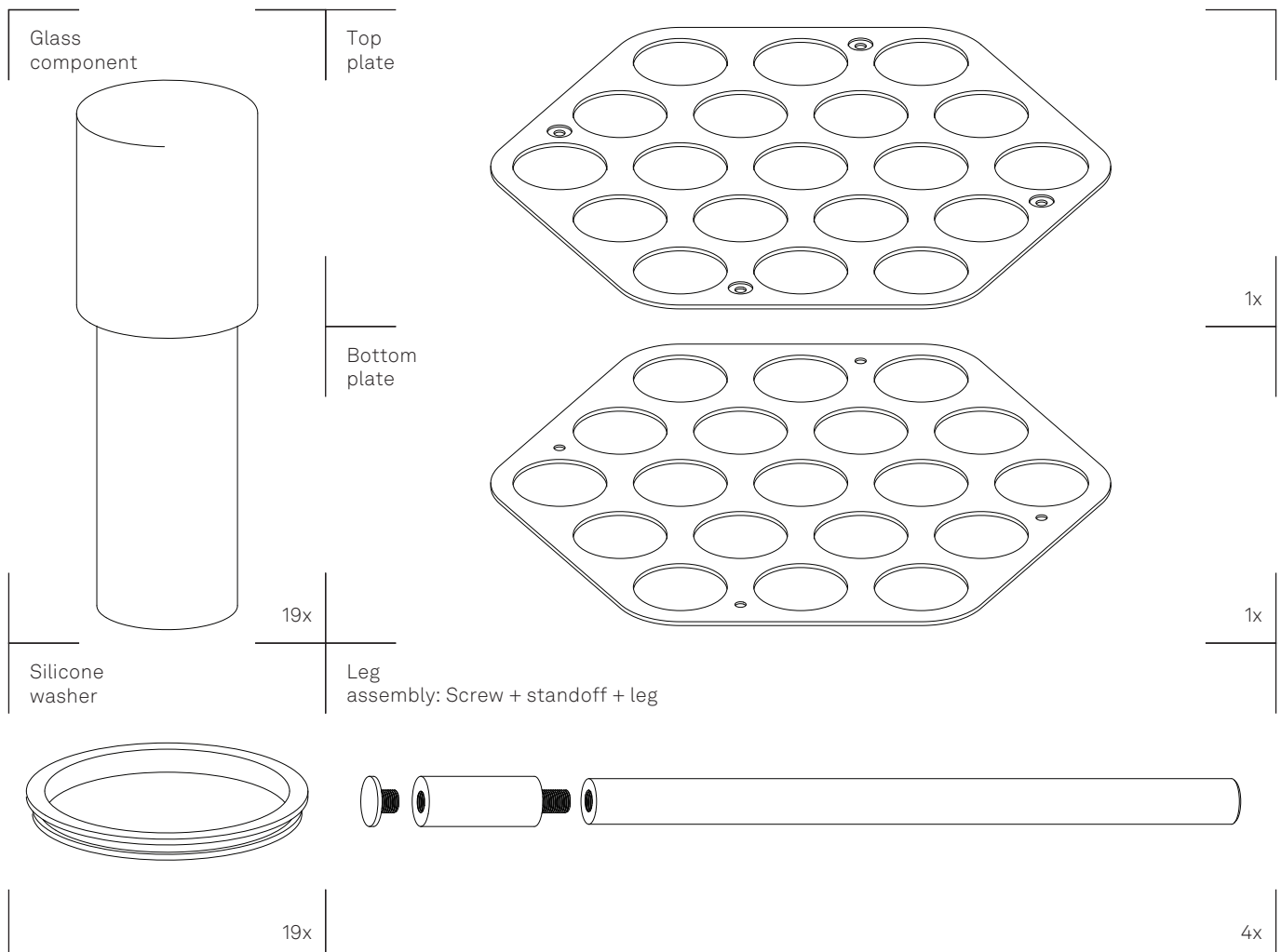
Congratulations on your purchase of a SkLO Field Table 19.

When unpacking individual items and parts of the table, make sure to lay them out on a protective surface that will neither mar the delicate metal finishes nor scratch the glass. Gloves (nitrile) are provided and must be worn during installation to avoid fingerprints on the finish of the exposed metal parts.

Your SkLO table will arrive with the hand-blown glass elements packed separately from the table frame.



CONTENTS:

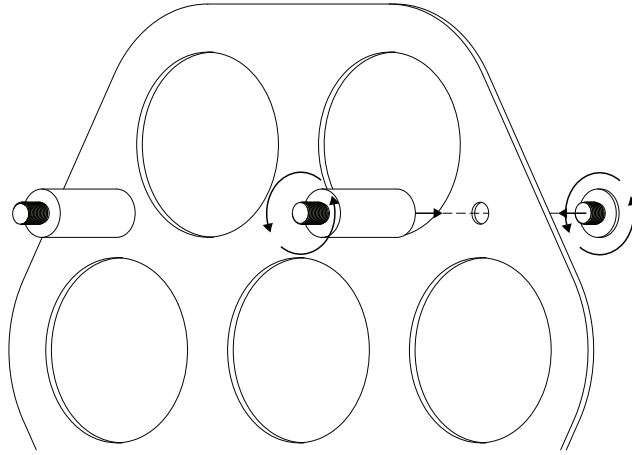




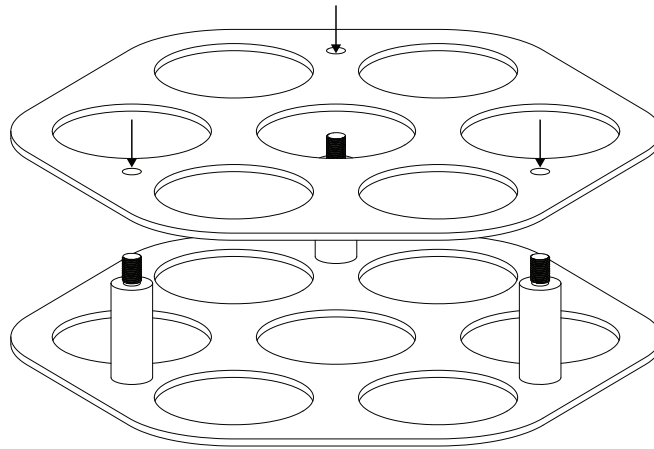
1. Install four standoff parts of the leg assembly onto the top plate. Working one at a time, carefully slide top screw part of leg assembly and pass it through a counterbore hole. Screw head must sit in the counterbore hole. Thread on the standoff part of the leg assembly on the exposed screw from the other side of the plate. Carefully install all four standoffs. Thread until fully tight. (Figure 1)
2. Lay down the top plate with standoffs pointing upwards on a protective surface. Carefully slide the bottom plate onto the exposed thread on the spacers. Take great care when positioning the bottom plate on spacers so that it does not slip and scratch on exposed thread. (Figure 2)
3. Carefully thread leg part of the leg assembly onto each of the exposed threads on standoffs. Thread until fully tight. (Figure 3)
4. Carefully flip the table so it sits on its legs. Install silicone washer into each of nineteen holes in the top plate. Each washer has slot around its outer circumference. Make sure, that the edge of the hole snugly fits entirely within the slot on the washer. (Figure 4).
5. Unwrap and lay out all individual glass components. Carefully slide a glass component into each hole. (Figure 5).



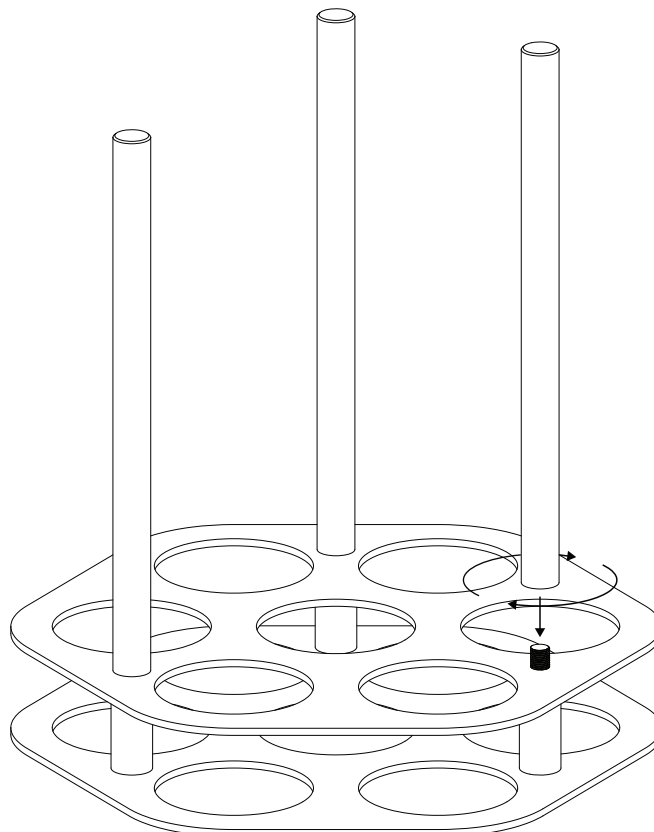
1.



2.

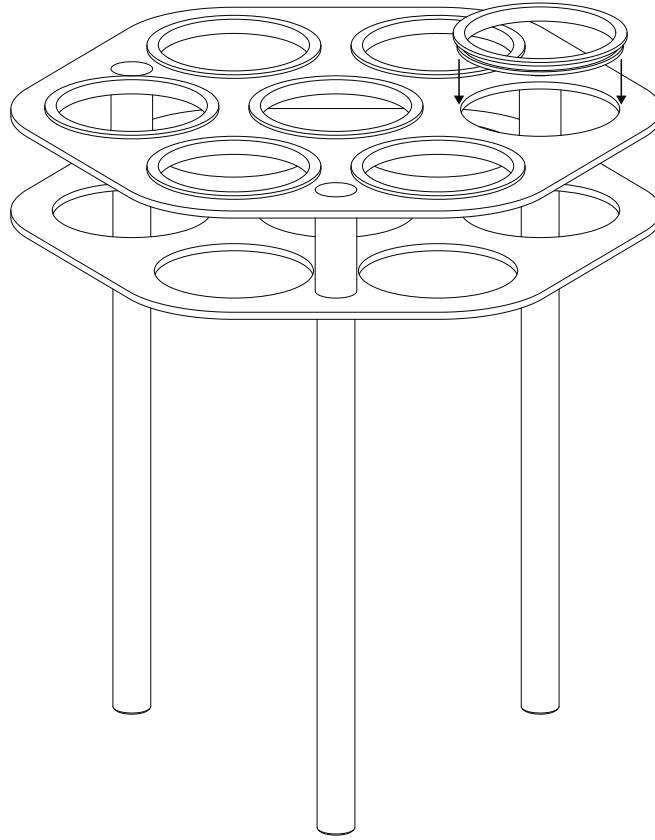


3.





4.



5.

