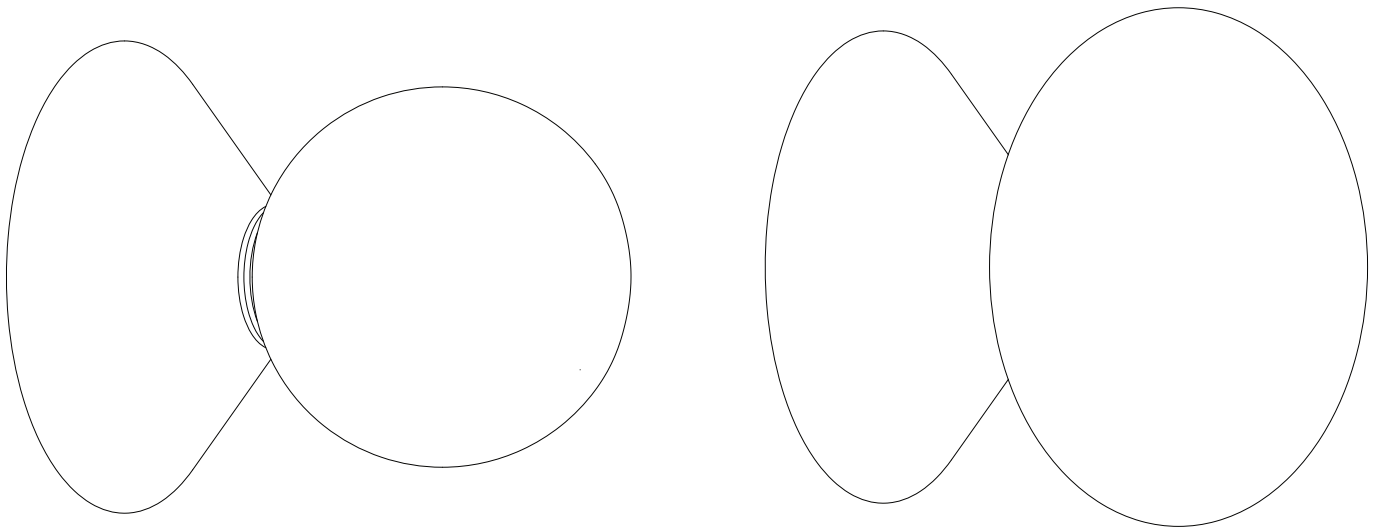




PEAK SCONCE/CEILING

Installation Instructions



SkLO

sklo.com

SkLO US 115 WEST NORTH STREET HEALDSBURG CALIFORNIA 95448 USA +1.707.385.2101 us@sklo.com
SkLO EU VÁŽNÍ 488 500 03 HRADEC KRÁLOVÉ CZECH REPUBLIC +420.495.542.071 eu@sklo.com

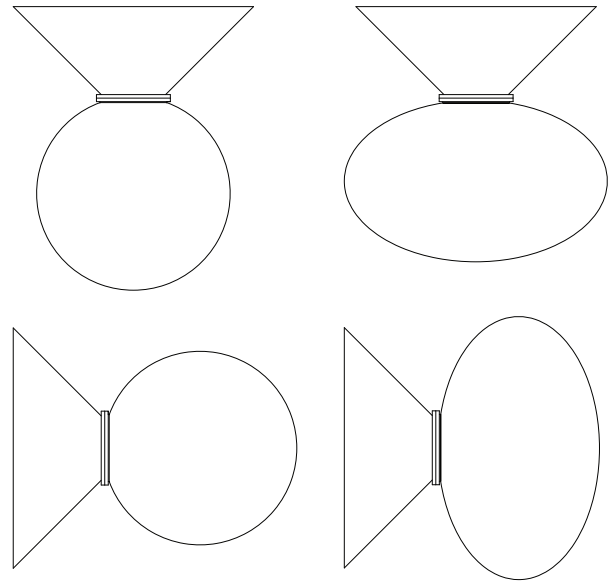


PEAK SCONCE/CEILING

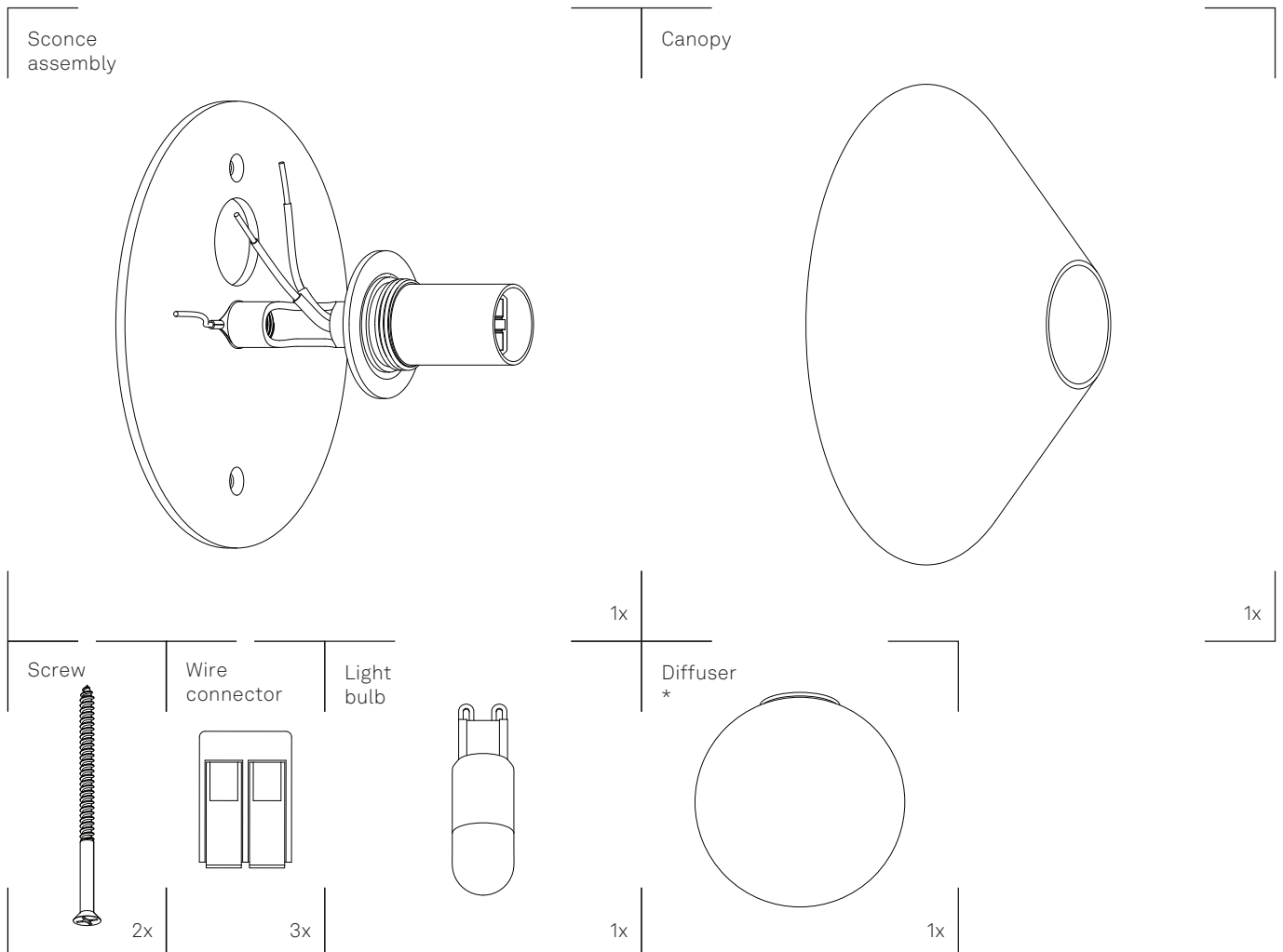
Congratulations on your purchase of a SkLO Peak Sconce/Ceiling. This product must be installed in accordance with the applicable codes by a person familiar with the construction and operation of the product and the hazards involved, preferably a licensed electrician. Use a maximum 7W bulb.

When unpacking individual items and parts of the light fixture, make sure to lay them out on a protective surface that will neither mar the delicate metal finishes nor scratch the glass. Gloves (nitrile) are provided and must be worn during installation to avoid fingerprints on the finish of the exposed metal parts.

Your SkLO fixture will arrive with the hand-blown glass elements packed separately from the light fixture itself.



CONTENTS:

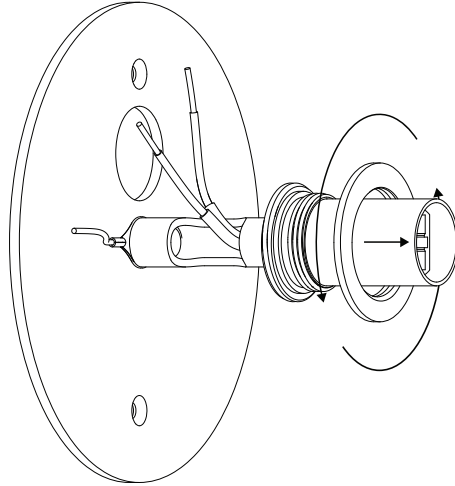




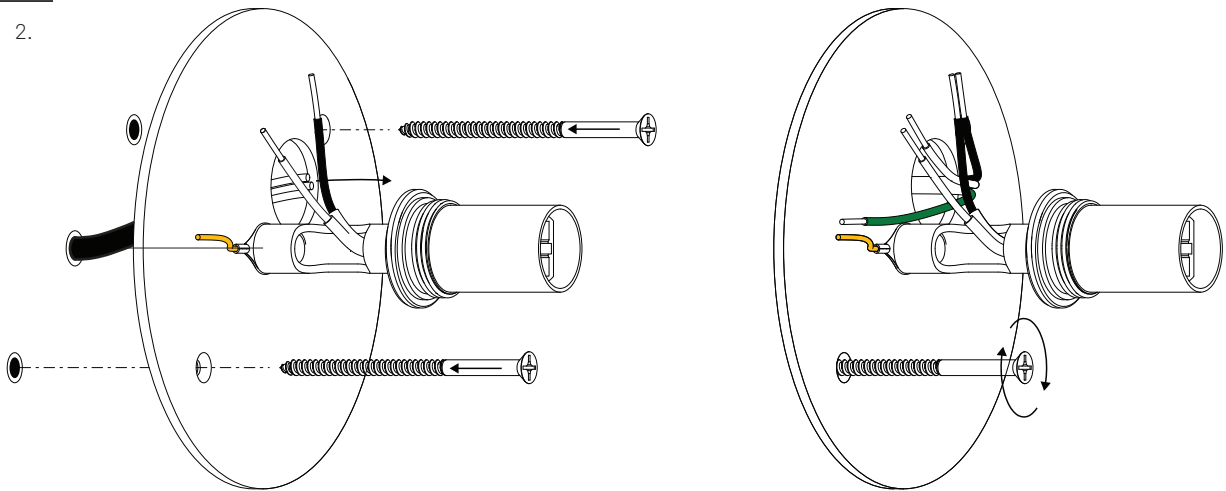
1. Disassemble the sconce assembly by unscrewing the circular nut. Lay out the individual parts of the sconce assembly on a clean surface (Figure 1).
2. The sconce assembly is installed directly to the wall/ceiling. Anchors or other accessories appropriate for both the provided fasteners and the wall/ceiling material/structure and weight of the fixture may be required (not provided). Align the sconce assembly and carefully move it all the way flush to the wall/ceiling taking care that no electrical cables or connections are exposed where the canopy meets the wall. Fasten the sconce assembly to the wall/ceiling by screwing the two provided screws through the countersunk holes provided in the mounting plate part of the assembly, making sure that the assembly sits flush against the wall/ceiling finish surface (Figure 2). Fasteners partially screwed through the two countersunk holes on the canopy into anchors may be used for an easier guidance of the canopy to the final position.
3. Carefully supporting the fixture, connect the exposed leads of the fixture to the exposed leads on the ceiling following the wiring diagram and using the provided wire connectors. Attach the ground (TE) wires to ground (TE) wires of the light fixture, phase 1 (L1) to phase 1 (L1) of the light fixture, neutral (N) to neutral (N) of the light fixture (Figure 3). Please note the number and type of wire connectors may vary.
4. Install the supplied LED light bulb (7W Max) into the socket. This fixture uses a G9 socket and light bulb. Light bulbs are to be inserted and removed by pushing the bulb straight into the socket, and by pulling it straight out. The bulb, when inserted, should have a tight fit. Do not force the bulb. If there is resistance, check to make sure nothing inside the socket is bent or obstructing the bulb. Always turn off the power to the fixture when changing the bulb (Figure 4).
5. Carefully slide the cone part over the fixture and flush it to the wall/ceiling surface. Take care that no electrical cables or connections are exposed where the canopy meets the wall/ceiling (Figure 5a). Fasten the canopy by tightening the ring nut onto the exposed thread on the sconce assembly. Do not overtighten (Figure 5b).
6. Unwrap and carefully thread a glass diffuser onto the socket (Figure 6). Thread on the glass diffusers just until they are visually tight – do not overtighten.



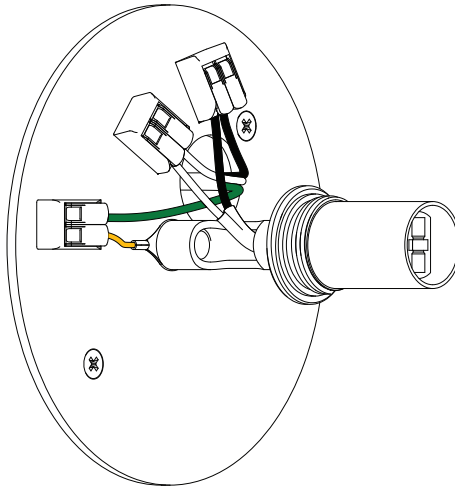
1.



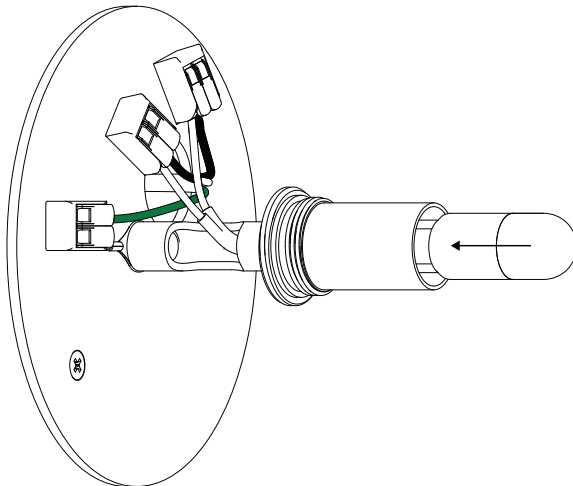
2.



3.

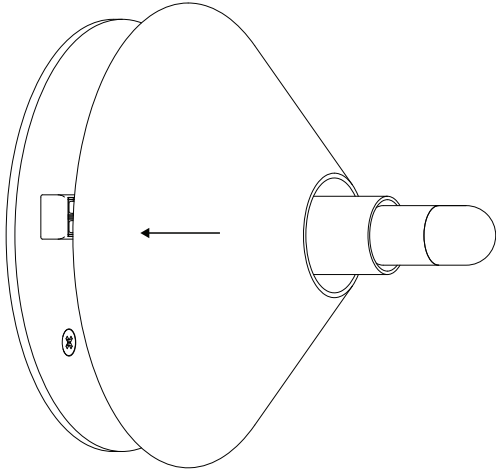


4.

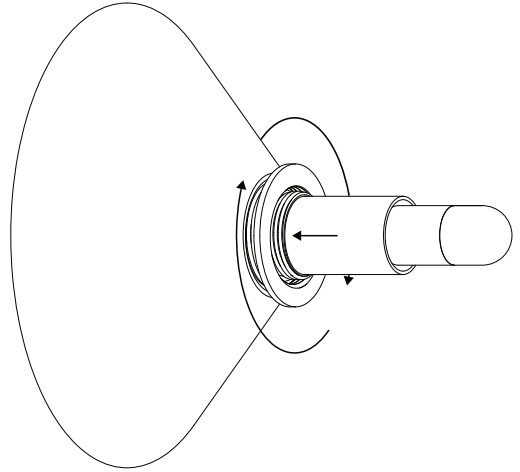




5a.



5b.



6.

