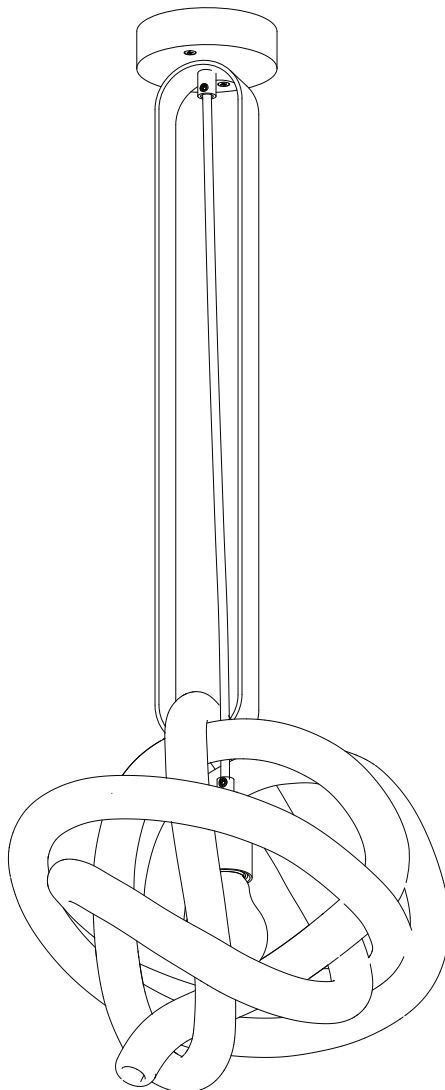




# WRAP PIN 1.21 PENDANT

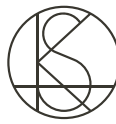
## Installation Instructions



# SkLO

sklo.com

SkLO US 115 WEST NORTH STREET HEALDSBURG CALIFORNIA 95448 USA +1.707.385.2101 us@sklo.com  
SkLO EU VÁŽNÍ 488 500 03 HRADEC KRÁLOVÉ CZECH REPUBLIC +420.495.542.071 eu@sklo.com

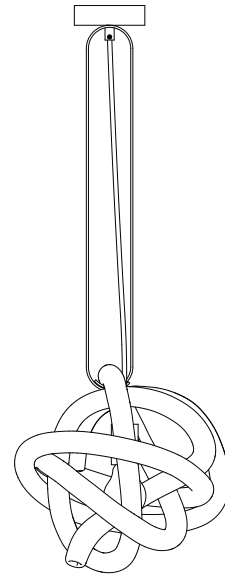


## WRAP PIN 1.21 PENDANT

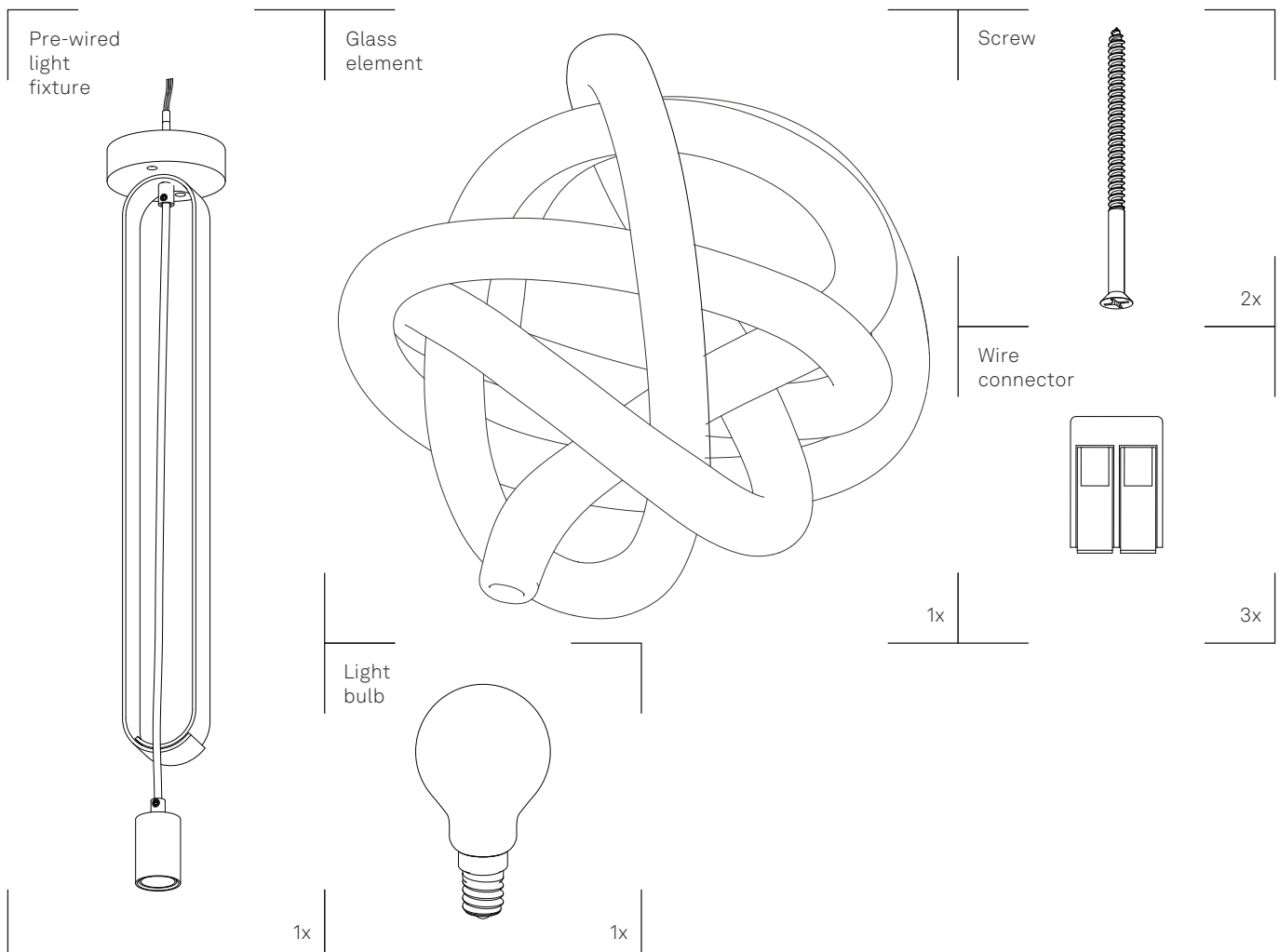
*Congratulations on your purchase of a SkLO Wrap Pin 1.21 Pendant. This product must be installed in accordance with the applicable codes by a person familiar with the construction and operation of the product and the hazards involved, preferably a licensed electrician. Use a maximum 25W bulb.*

**When unpacking individual items and parts of the light fixture, make sure to lay them out on a protective surface that will neither mar the delicate metal finishes nor scratch the glass. Gloves (nitrile) are provided and must be worn during installation to avoid fingerprints on the finish of the exposed metal parts.**

*Your SkLO fixture will arrive with the hand-blown glass elements packed separately from the light fixture itself.*



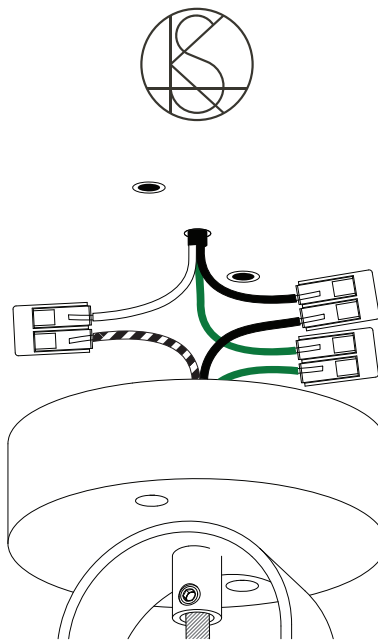
### CONTENTS:



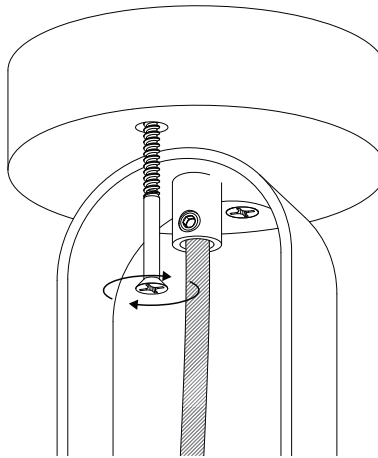


1. The canopy and the 'pin' will come pre-assembled and wired with the fabric-wrapped electrical cord and the brass socket. Please do not remove the protective packaging from the brass socket and leave the fabric-wrapped electrical cord tied in a loop during installation and wiring.
2. Carefully supporting the fixture, connect the leads from the fixture to the exposed leads on the ceiling according to the wiring diagram using the wire and wire connectors provided. Attach the ground (TE) + ground (TE) from light fixture, phase 1 (L1) + phase 1 (L1) from light fixture, neutral (N) + neutral (N) from light fixture (Figure 1). Please note the number and type of wire connectors may vary.
3. The canopy installs directly to the ceiling. Anchors or other accessories appropriate for both the provided fasteners and the ceiling material/structure and weight of the fixture may be required (not provided). Align the canopy and carefully raise the supported fixture all the way flush to the ceiling taking care that no electrical cables or connections are exposed where the canopy meets the ceiling. Fasten the canopy to the ceiling by screwing the two provided screws through the countersunk holes provided in the canopy, making sure that the canopy sits flush against the ceiling finish surface (Figure 2). Take great care when installing screws so that tools do not slip and scratch the canopy finish, or damage the exposed screw head slots.
4. Uncoil and gently straighten out the fabric-wrapped electrical cord, then carefully unwrap the brass socket.
5. Install the supplied LED light bulb (25W Max) into the socket (Figure 3).
6. Open the bottom of the 'pin' element. Gently but firmly pull the two overlapping sides apart until the 'pin' pops open. Insert the socket with the light bulb carefully within the glass element, then carefully slip the glass up into the 'pin' and gently but firmly push the 'pin' closed again. Once the 'pin' is closed around the glass, carefully allow the glass to hang from the bottom of the 'pin' (Figure 4). Note that there are several ways to attach the glass to the 'pin', and you should choose one that works well before inserting it into the 'pin'. Note that some scratching of the finish may occur from the opening or closing of the 'pin', but these will only be visible when the 'pin' is open and will not affect the rest of the finish on the piece.

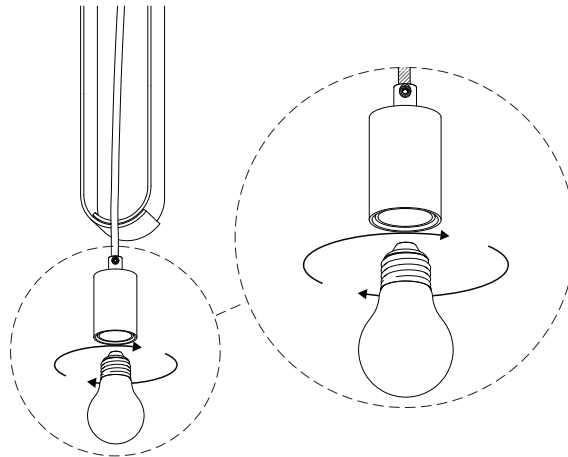
1.



2.



3.



4.

