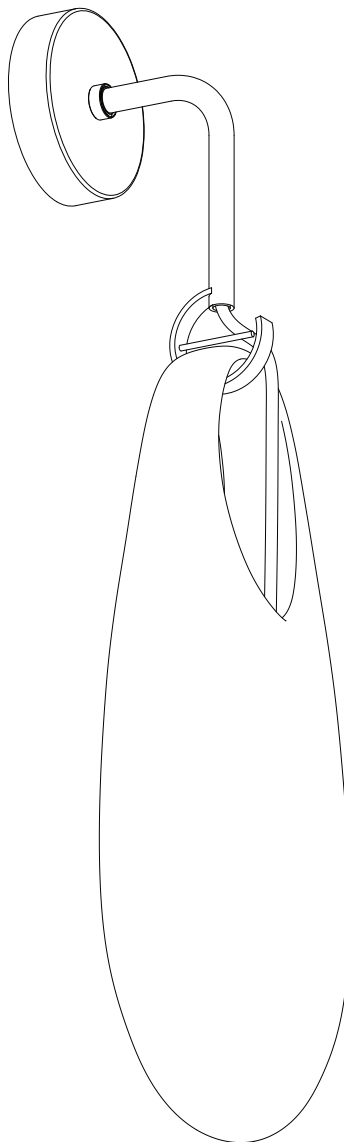




HOLD 18 SCONCE

Installation Instructions



SkLO

sklo.com

SkLO US 115 WEST NORTH STREET HEALDSBURG CALIFORNIA 95448 USA +1.707.385.2101 us@sklo.com
SkLO EU BRATŘÍ ŠTEFANŮ 902/71 500 03 HRADEC KRÁLOVÉ CZECH REPUBLIC +420.495.542.071 eu@sklo.com



HOLD 18 SCONCE

Congratulations on your purchase of a SkLO Hold 18 Sconce. This product must be installed in accordance with the applicable codes by a person familiar with the construction and operation of the product and the hazards involved, preferably a licensed electrician. Use a maximum 25W bulb.

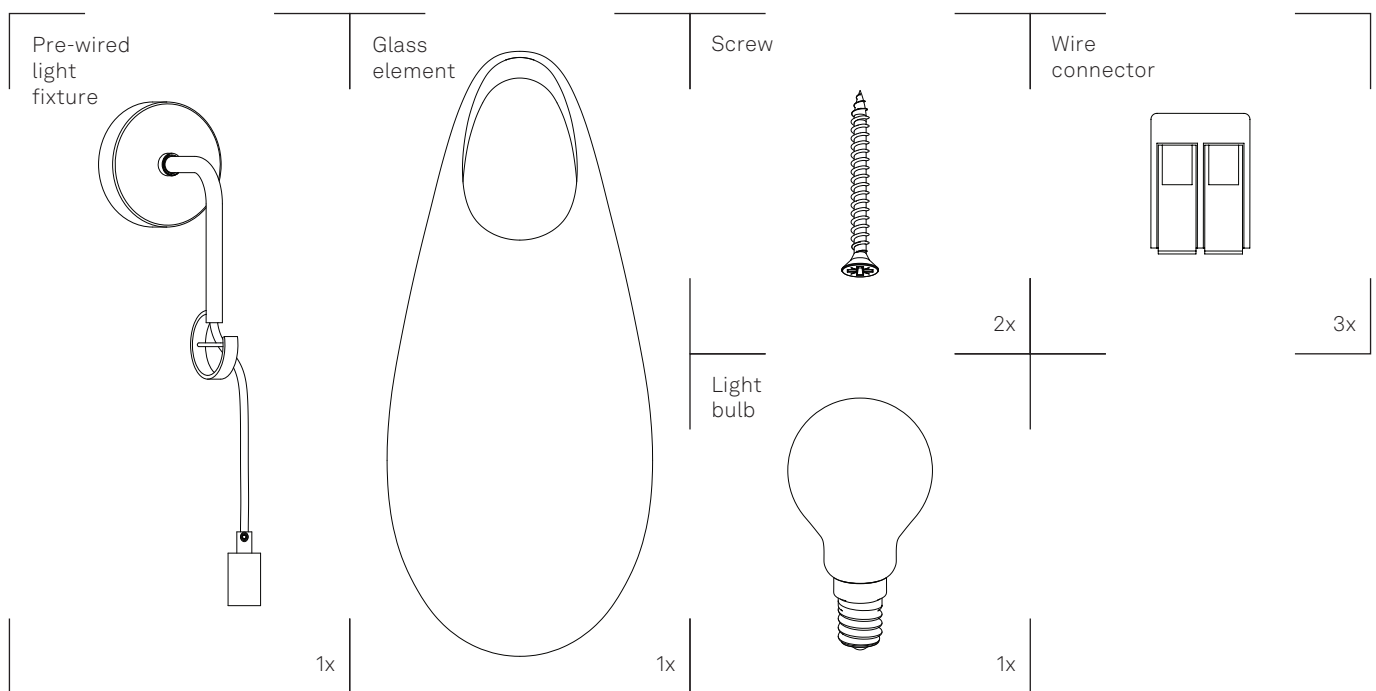
When unpacking individual items and parts of the light fixture, make sure to lay them out on a protective surface that will neither mar the delicate metal finishes nor scratch the glass. Gloves (nitrile) are provided and must be worn during installation to avoid fingerprints on the finish of the exposed metal parts.

FOR WALL MOUNT ONLY

Your SkLO fixture will arrive with the hand-blown glass elements packed separately from the light fixture itself.



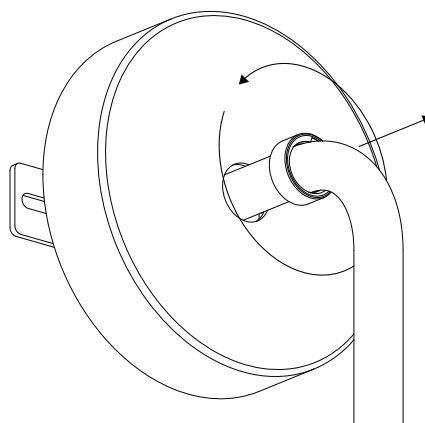
CONTENTS:





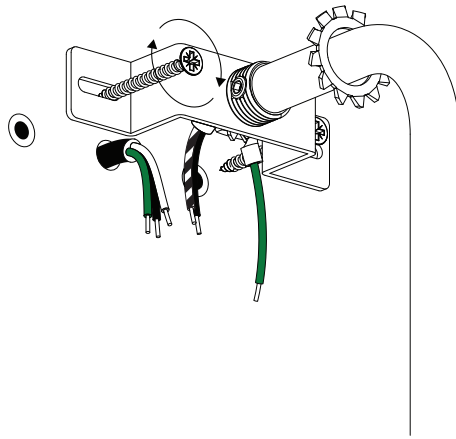
1. The canopy and the hook will come pre-assembled and wired with the fabric-wrapped electrical cord and the brass socket. The length of the cord/socket will be finished – do not adjust the length. Please do not remove the protective packaging from the brass socket during installation and wiring.
2. Carefully unscrew the canopy nut and slide it together with canopy over the stem (Figure 1.) Take great care when sliding the canopy nut and the canopy so that they do not slip and scratch the stem or other parts of the pendant.
3. The mounting plate installs directly to the pre-drilled holes with inserted anchors (not provided) that are appropriate to the wall material. Align the mounting plate so it sits flush against the wall. Taking care that no electrical cables or connections are exposed where the mounting plate meets the wall. Fasten the mounting plate to the wall by screwing the two provided screws through the holes provided in the mounting plate, making sure that the mounting plate sits flush against the wall finish surface (Figure 2). Take great care when installing screws so that tools do not slip and scratch the pendant finish.
4. Adjust the length of wire and fixed (Figure 3). Connect the exposed leads of the fixture to the exposed leads on the wall following the wiring diagram and using the provided wire connectors. Attach the ground (TE) wires to ground (TE) wires of the light fixture, phase 1 (L1) to phase 1 (L1) of the light fixture, neutral (N) to neutral (N) of the light fixture (Figure 3). Please note the number and type of wire connectors may vary.
5. Carefully slide the tooth lock washer and the canopy over the stem. Take care that no electrical cables or connection are exposed where the canopy meets the ceiling. Fasten the canopy by screwing the canopy nut onto mounting plate (2.5Nm for tooth washer up to M10 and 5Nm for tooth washer over M10), making sure that the canopy sits flush against the ceiling finish surface (Figure 4). Take great care when installing canopy nut so that it does not slip and scratch the canopy finish.
6. Remove the protective packaging from the brass socket and install the supplied light bulb (25W Max) into the socket (Figure 5).
7. Unscrew and pull out the safety pin (Figure 6). Insert the socket with the light bulb carefully into the hole at the top of the glass diffuser, and allow it to hang freely inside the glass vessel while hanging the glass vessel on the hook (Figure 7). Screw the safety pin back into its position (Figure 8).

1.

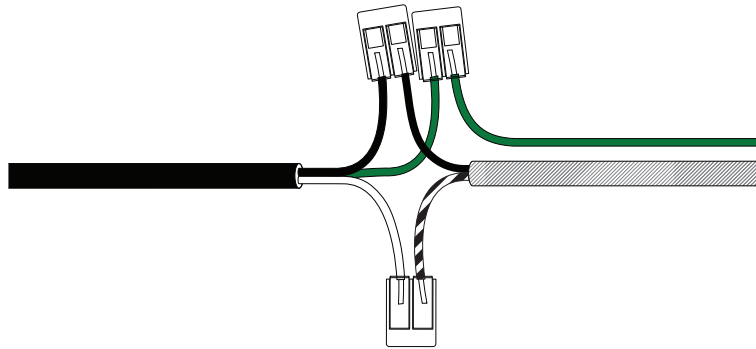




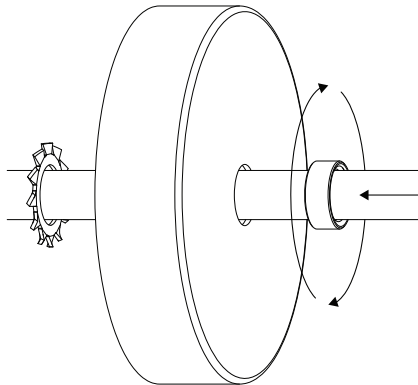
2.



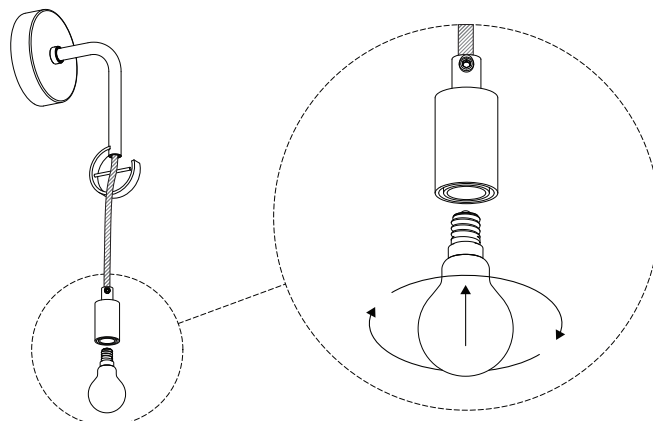
3.



4.

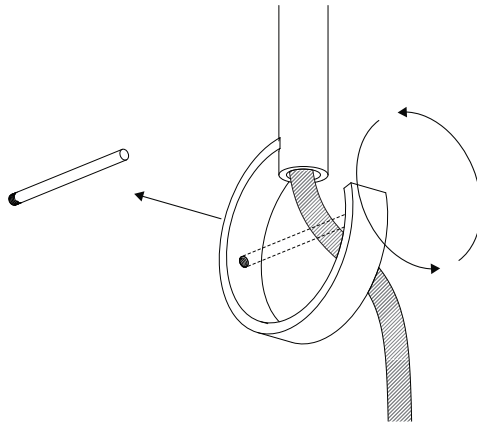


5.

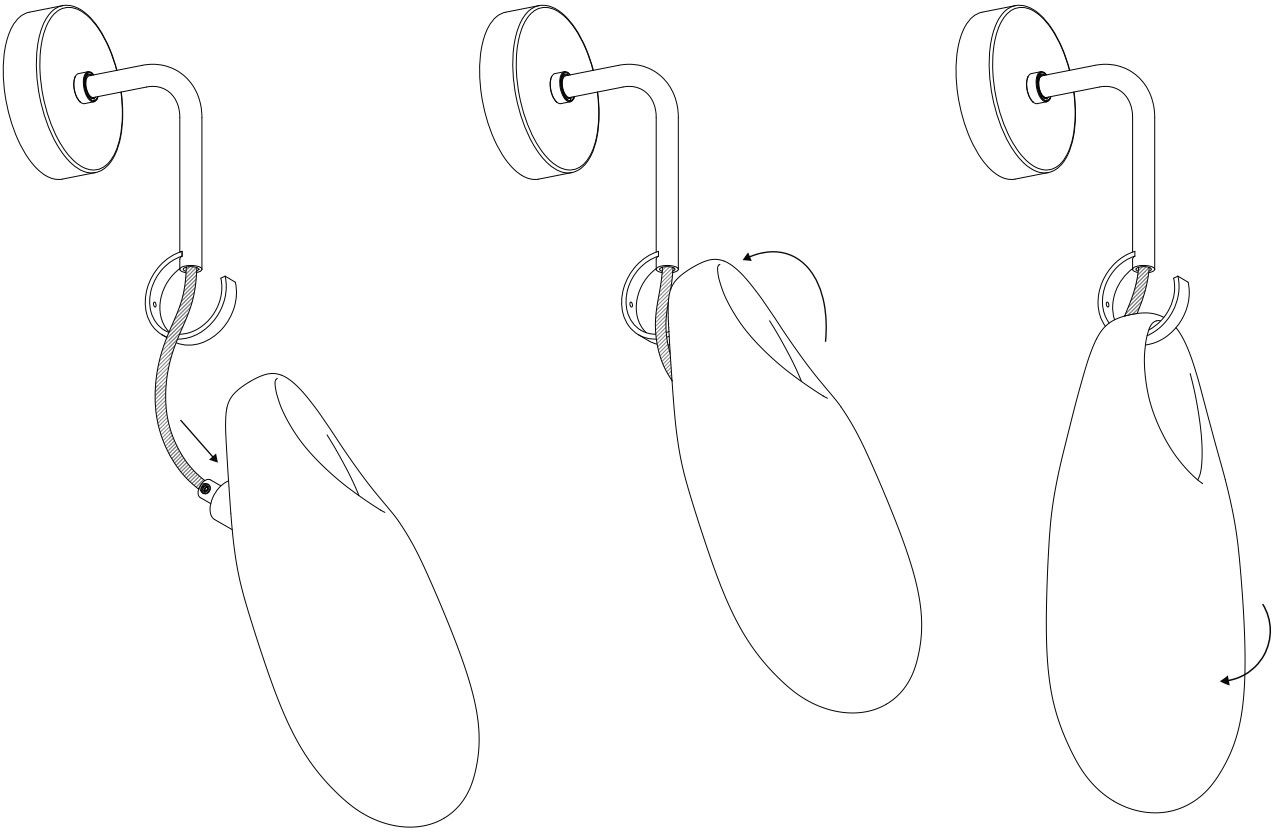




6.



7.



8.

